



Hydrotherapy Water Management – T.E.S.T. Ltd

T.E.S.T. Ltd testing laboratory

The T.E.S.T. Ltd laboratory provides reassurance to you and your customers that your facility has safe pool and treadmill water. The laboratory is UKAS accredited therefore you can trust the validity of your water testing results.

They provide simple to use testing kits which contains all the items required to take a water sample. Friendly and experienced staff are always on hand to answer any questions regarding payment, sample delivery and laboratory results.



The laboratory testing service is as easy as 1 2 3:

1. Take a monthly water sample using the provided sampling kits.
2. Call T.E.S.T Ltd to arrange a collection via courier for a time which suits you.
3. Sit back and await the electronic results certificate.



Why choose T.E.S.T. Ltd?



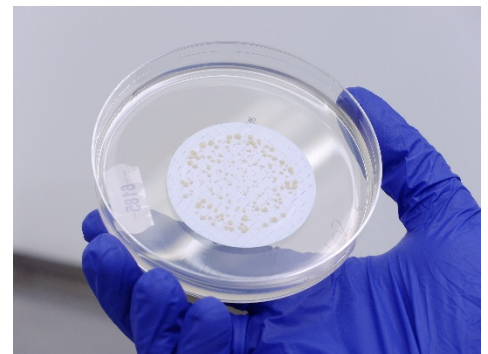
- **Contract-free** - we understand that small businesses such as yourselves do not want to commit to long testing contracts.
- **Low cost** - we are proud to be able to offer the IRVAP/ ICH water package at a competitive price. Sample transportation is also included in the cost.
- **Flexible** - you take the samples at your convenience and give us a call to arrange the collection at a time that suits you.
- **Bolt-on testing** - extra analysis such as Legionella or TVC can be bolted-on by request for a small one-off fee.
- **Expert staff** - trained microbiologists are on hand to explain results and answer queries that you may have.
- **Electronic results** - we send our laboratory results via email in PDF format meaning that they can be easily sent to the ICH.

The ICH/IRVAP water testing package

Standard Hydrotherapy test kit – Pseudomonas aeruginosa, E. coli and Coliform enumeration. **£29.85 + VAT**
48h Results

Legionella Bolt-on (additional to testing above, advised each quarter with species identification) **£15.00 + VAT**
10 day Results

TVC Bolt-on (additional to testing above, advised monthly) **£2.99 + VAT**
5 day Results





All kits include sample bottles, ice packs and laboratory sample submission forms.
All costs include sample transportation.

www.testmedical.co.uk | 01782 572400 | enquiries@testmedical.co.uk

Hydrotherapy Water Management – Water Quality

How to take a water sample?

Correct sampling technique is vital to ensuring water samples are not contaminated by the user and are also representative of the body of water.

The most appropriate site for taking a sample is where water movement is kept to a minimum, away from fresh water inlets/outlets.

Sample bottles contain a small amount of sodium thiosulfate. This looks like small clear droplets and is present to neutralize disinfectant in the sample. This ensures that any bacteria present will survive during transit to the testing laboratory.



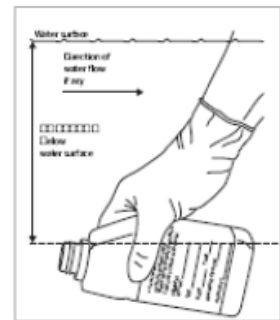
www.testmedical.co.uk
01782 572400
enquiries@testmedical.co.uk



Steps

1. Freeze the included icepack for at least 24h prior to taking the sample and call TEST Ltd to arrange a courier collection of your sample.

2. Ensure gloves are worn (outside shoes should be removed or plastic shoe coverings worn if entering the pool to take the sample).



3. Aseptically open the sample bottle; immerse the bottle under the water at a 45° angle ensuring that the neutraliser solution is not tipped out.

4. Remove the bottle from the water, if required pour off a small amount of sample to leave a 1-2cm air gap above the water. Replace the cap.

5. Invert a few times to mix the contents and label the bottle with sample date, time, company name and type of sample (spa, treadmill, pool etc.)



6. Place into the TEST Ltd sample box with a frozen ice pack and a completed sample submission return form.

7. Leave the box in the designated collection point for the courier.

